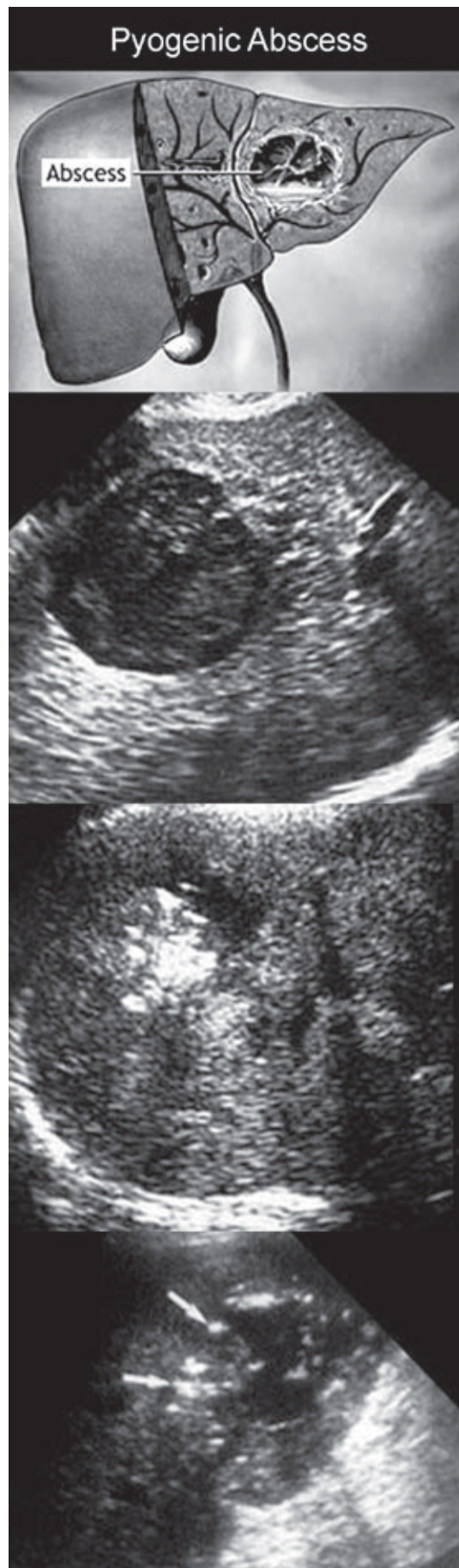


Pyogenic (Bacterial) Abscess

- Occurs commonly in the right lobe of the liver
- Reaches the liver via the bile ducts, portal veins, hepatic arteries, or lymphatic channels
- Complex mass, echogenic gas, reverberation artifact
- Varied sonographic appearance. Differential diagnosis includes:
 - Amebic abscess
 - Echinococcal cyst
 - Hemorrhagic cyst
 - Hematoma
 - Cystic neoplasm
- Symptoms: RUQ pain, leukocytosis, fever, and elevated liver function tests
- Aspiration is needed to confirm diagnosis.



HINT - Differentiation of a pyogenic abscess from an amebic abscess is difficult. If a patient has travelled out of the United States, an amebic abscess may be the correct diagnosis.