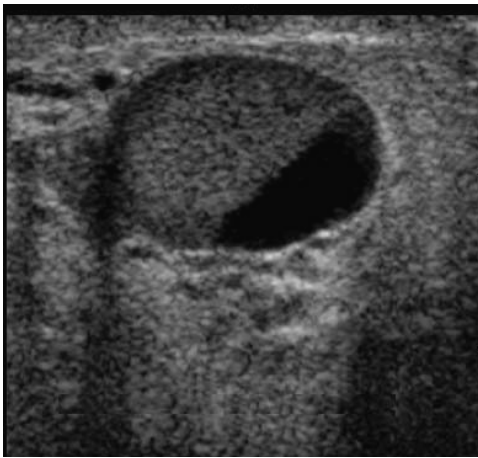


Artifact within a Cyst

Artifacts within a cyst may be due to:

- Improper TGC
- Overall Gain too high
- Improper Focal Position
- Small Cyst Size
- Superficial Location (Use a stand-off pad)
- Deep Location
- Diminished Acoustic Enhancement
  - Dense stroma surrounding the cyst
  - Deep location
  - Small cyst size

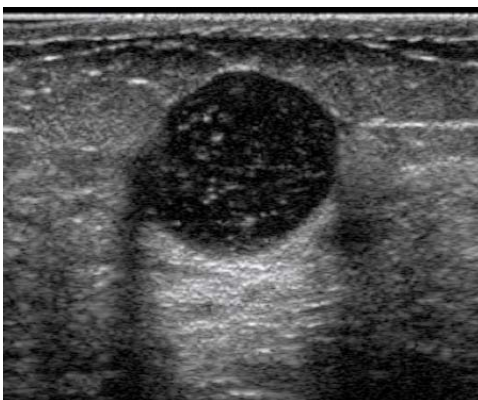


Fatty Cyst  
Also known as Acorn Cyst

### Complex Cysts

Cysts that contain internal echoes or changes in the cystic wall are considered complex cysts.

Types of Complex Cysts	
Debris-Filled, Foam or Inspissated Cyst	Cellular debris, epithelial cells, apocrine cells, foam cells, and cholesterol crystals
Fatty Cyst	Fat and protein cells
Hemorrhagic Cyst	Blood cells
Inflammatory Cyst	Inflammatory cells and purulent fluid, may have thick walls
Abscess	Purulent fluid, may have thick walls
⌘ Galactocele	Milk
Milk of Calcium Cyst	Calcium in dependent portion
⌘ Sebaceous Cyst (Epidermal Inclusion Cyst)	Sebum (greasy substance)
Oil Cyst	Oil cells
Septated Cyst	Fibrous stromal cells
Calcified Cyst	Calcium deposits in the wall of the cyst
Malignant Cyst	Malignant neoplastic cells, may have thick walls



Complex Cyst