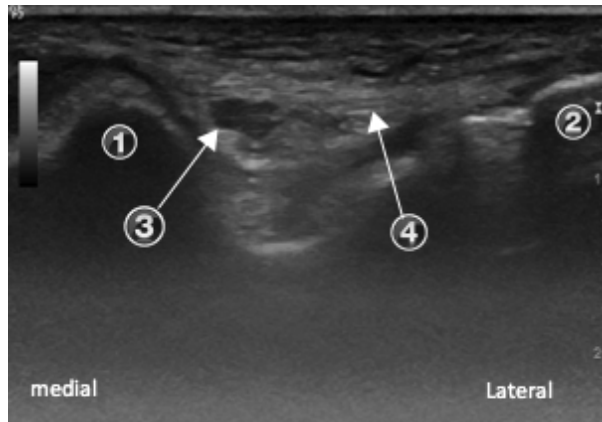


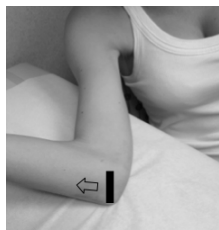
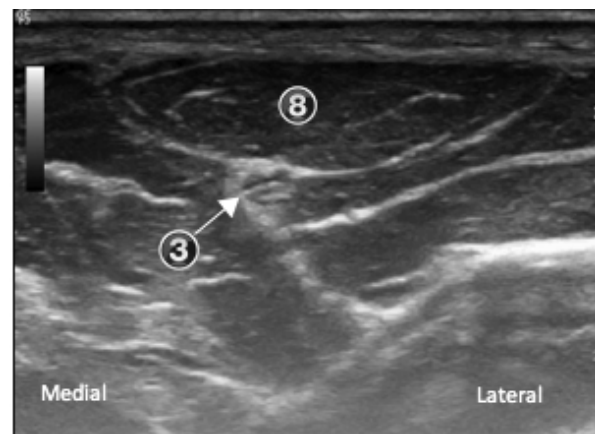
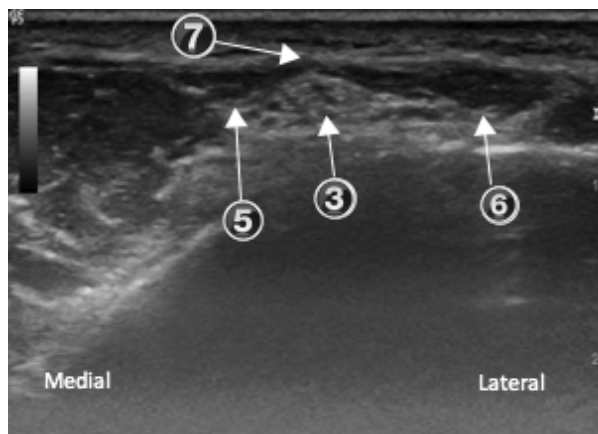
Musculoskeletal Ultrasound Review

- Follow the ulnar nerve distally through the cubital tunnel looking for evidence of impingement and other abnormalities.



□ Cubital tunnel—images follow ulnar nerve through cubital tunnel from proximal to distal:

1. Medial epicondyle
2. Olecranon process
3. Ulnar nerve
4. Cubital retinaculum
5. FCU—humeral head
6. FCU—ulnar head
7. Arcade of Osborne
8. FCU after 2 heads join



Ulnar nerve impingement

- Nerve impingement results in hypoechoic swelling just proximal to the site of compression.
 - Cross-sectional area > 7.5mm is considered abnormal for the ulnar nerve.
- Compressive neuropathy of the ulnar nerve at the elbow is the 2nd most common compressive neuropathy of the upper extremity.
- Patients typically complain of paresthesias involving ulnar 1-1/2 digits/hand and weakened grip/pinch.