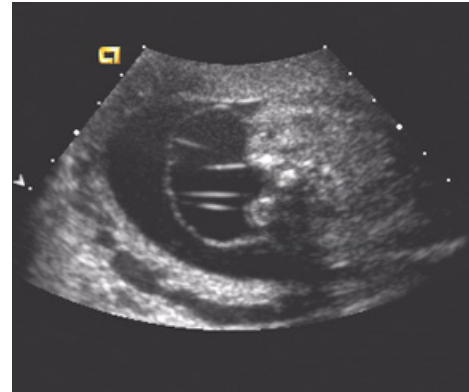


## Sonographic Findings:

### Transverse

- splaying of posterior ossification centers into a "U" or "V" shape
- when sac is intact, a cystic structure may be seen extending from the back.  
Appearances include: a small, simple cystic structure, a cyst with septations and/or solid matter.



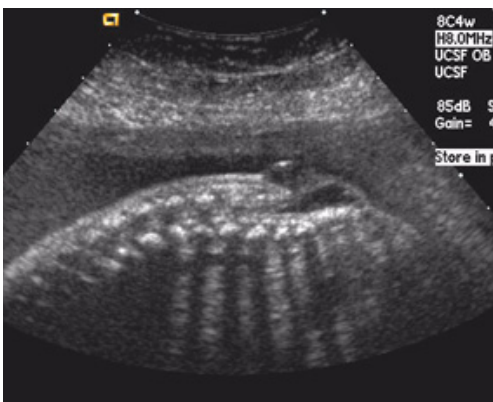
*myelomeningocele transverse view*



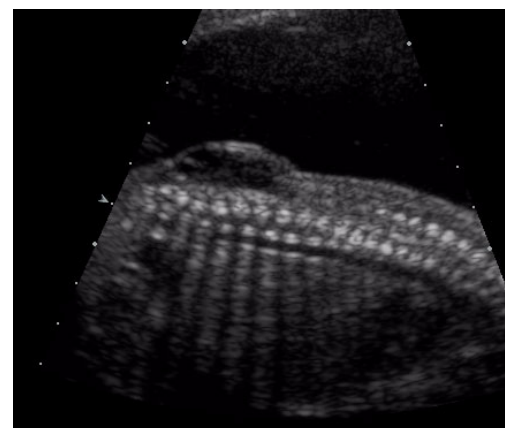
*transverse splayed ossification centers*

### Sagittal

- splaying of parallel lateral ossification centers
- soft tissue defect or discontinuity of skin and muscle of posterior back



*sagittal myelomeningocele*



*sagittal myelomeningocele*