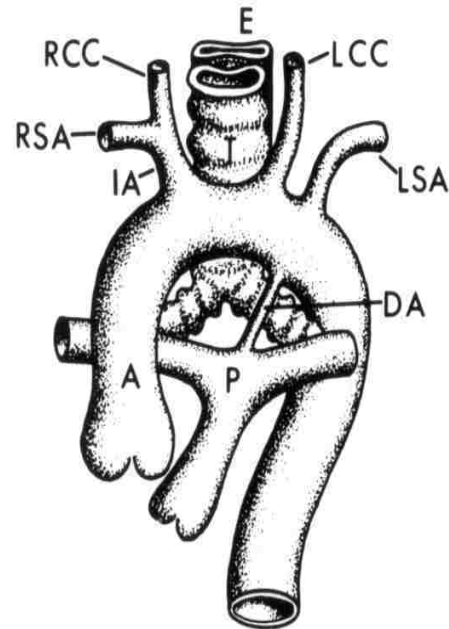


AORTA

- Ascending aorta
- Aortic arch
 - Innominate artery (IA)
 - Right subclavian artery (RSA)
 - Right common carotid (RCC)
 - Left common carotid (LCC)
 - Left subclavian artery (LSA)
- Descending aorta



PULMONARY ARTERY

- Main and branch pulmonary arteries (P)
- Ductus arteriosus (DA)

E = esophagus

T = trachea

